



BEGIN STRONG. STAY STRONG.

PRODUCT CATALOG

2019-2020



PROTECT YOUR VALUABLE CALVES WITH THE WORLD'S TOUGHEST HUTCHES

The VanBuurens know first-hand the challenges involved in raising healthy dairy calves. As third-generation dairymen they began experimenting with hutch designs to provide a healthier, more comfortable environment for calves while improving efficiencies for their business. In 1995, they founded Agri-Plastics to provide local dairy farmers with a better option for housing and caring for the next generation of milkers.

Over the years, Agri-Plastics listened and learned as other producers talked about their own calf housing challenges. And they responded with game-changing innovations that have since become industry standards.

Today, Agri-Plastics hutches are prized the world over for their unique durability, efficiency and ease of use. But at the heart of it all is a family true to its roots, delivering proven calf housing systems for dairy farmers, by dairy farmers.

We understand the value of your calves, and we're dedicated to helping you shelter your investment.



Darren and Rob VanBuuren

AGRI-PLASTICS
The Calf Housing Specialist®



**DESIGNED FOR FARMERS,
BY FARMERS**

**FOCUS
ON**

5

Reduce calf mortality through Focus on 5.

Agri-Plastics seeks to maximize animal welfare by focusing on 5 life-sustaining attributes of good calf housing. By developing our hutches with these attributes in mind, we are helping you improve the way you dairy.

Why grow your business with Agri-Plastics?

Engineered for durability.

Rugged Agri-Plastics products are uniquely manufactured to withstand punishing weather extremes along with everyday wear and tear, calf after calf, year after year. The 10-year warranty on our calf hutches is proof of our commitment to durability.

Easier on calves, crew and you.

Because life on a dairy is rough enough, Agri-Plastics calf hutches are designed for maximum simplicity and ease of use at every stage, from assembling to cleaning. See pages 16-17 for our exclusive "Slide 'n' Go" Flex-Pen feature!

*"We selected Agri-Plastics for our new expansion at Milk Source. Agri-Plastics was the BEST CHOICE for us because of their well renowned, superior ventilation, durability and features."
-Ermith Ocampo, Milk Source*



VENTILATION

Agri-Plastics calf housing products are designed to maximize fresh airflow while minimizing ammonia for improved calf health and comfort.



BEDDING

Your calves enjoy a cleaner, healthier environment, thanks to our unique bedding doors which enable quick and easy access for bedding.



TEMPERATURE

In all Agri-Plastics calf housing products, the temperature is always comfortable. We have designed our products with the calves in mind. There is plenty of airflow in our hutches and pens, allowing the temperature to be at a consistent rate all the time.



FEEDING

Agri-Plastics calf products are engineered to optimize food intake and safety, from colostrum to concentrate.



MANAGEMENT

When you're backed by The Calf Housing Specialist, managing your investment is easier and more cost-effective than ever!

CALF HOUSING

SELECTION GUIDE

Our hutches are built to last, while saving you time and maintaining herd health. Our innovations are based on our own experiences raising calves and decades of experience in calf rearing.

Climate Control

Whether you live in extreme heat or bitter cold, your particular climate will affect which features matter most to you and your calves' health. That's why Agri-Plastics offers hutches with right or left offset doors or full openings to accommodate varying climates.

Built for Your Operation

At Agri-Plastics, we understand that calf housing is never "One Size Fits All." What works for a small dairy most likely will not work for a large operation, so we offer a variety of options and sizes to make sure you can find the best fit for your operation.



HOUSING OPTIONS

Regardless of your facility's setup and calf needs, Agri-Plastics has the solutions to shelter your investment.



STARTER PEN

Set directly on the ground or use our optional Elevated or Movable Starter Pens.



FLEX-PEN

This innovative solution to calf housing allows calves to be housed individually or grouped together via the easily detachable center panel.

Find the right Agri-Plastics product for your operation.



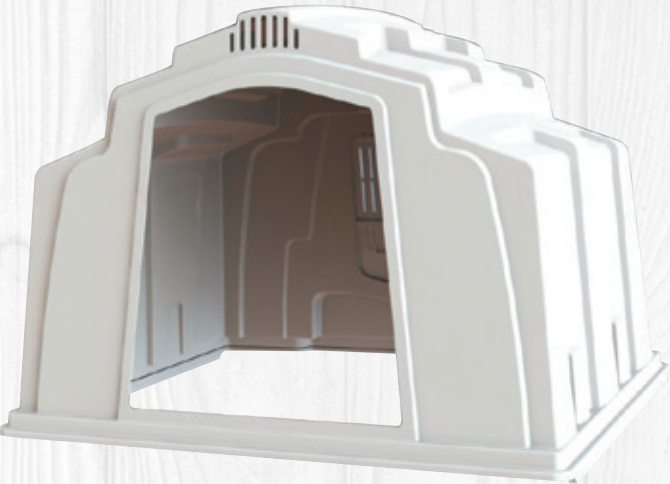
FLEX-HUTCH

Sturdy construction accommodates two or three calves; cleanup and maintenance are easy, economical and efficient.



GROUP HUTCH

Ease your calves' transition from hutches to group housing by using our group hutches. Helps reduce calf stress.



CALF HUTCH

The Deluxe SSL Space Saver Calf Hutch works well for shorter periods of time or smaller calves. Facilitates airflow, comfort and cleanliness.

For standard growth periods of 6 to 8 weeks of age, turn to the Deluxe SL Standard Length Calf Hutch. Most popular for weaned calves up to 8 weeks. Choose between side or rear feeding options.

The Deluxe EXL Extra-Large Calf Hutch accommodates longer growth periods of 8 to 12 weeks. The rear of the hutch stays dryer and warmer on cool days, providing better protection from wind, rain and snow.



Deluxe SL Calf Hutch



Deluxe SSL Space Saver Calf Hutch



Deluxe EXL Extra Large Calf Hutch

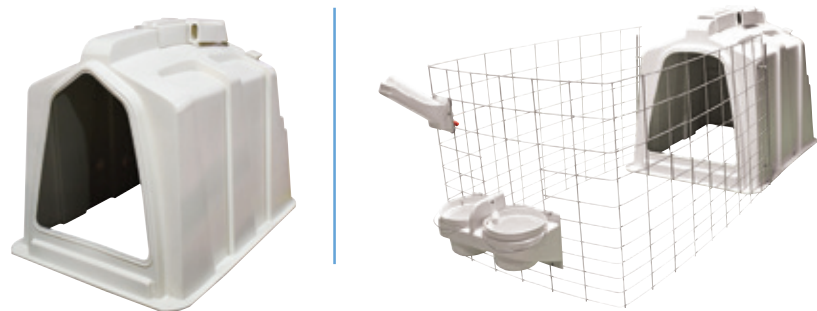
CALF HUTCH* SELECTION GUIDE

Our Rugged Calf Hutches

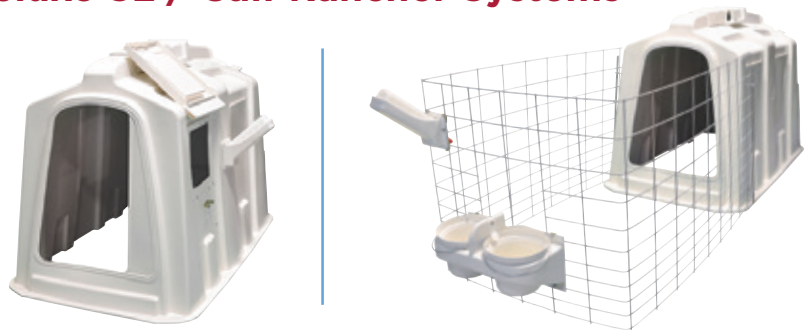
are engineered to not only shelter your livestock, but to dependably serve you, even after years of rough daily use. Choose from three models – the Deluxe SSL, Deluxe SL and Deluxe EXL – each available either on its own or as part of a complete Calf Rancher System. All systems come ready to use with airflow vents, 3-In-One rear door, outside feeding station, two poly buckets and a galvanized wire fence. It’s no wonder our hutches and systems are used by some of the world’s largest farms to shelter, protect and grow their investments.

* Patented and Patents Pending

Deluxe SSL / Calf Rancher Systems*



Deluxe SL / Calf Rancher Systems*

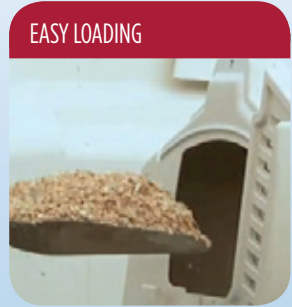


Deluxe EXL / Calf Rancher Systems*



*Fence mount bottle holder not included on all rancher systems

Standard Features



Built tough enough to handle
the most demanding operations.

AGRI-PLASTICS
The Calf Housing Specialist®



WHAT SETS OUR CALF HUTCHES APART

The only rear door that does three things: ventilation, bedding and the option to rear feed. Agri-Plastics 3-In-One Rear Door also has a built-in leaning edge for easy cleaning. This prevents the hutch from falling over when pressure washing. Only one person required for cleaning.



DOUBLE OR TRIPLE FLEX-HUTCH™ *

Our most flexible housing ever.

Each Flex-Hutch can house two or three calves depending on your choice of configurations. The Flex-Hutch can be placed directly on the ground or on an optional elevated base to optimize drainage and improve efficiencies during chore time. The sturdy plastic construction is easier and less expensive to maintain than wooden hutches while lasting up to four times as long, saving you time, money and headaches.

- Fits 2 or 3 calves with changeable inner panels
- Cleans and sanitizes easily, so you can put it back in service with zero downtime
- Simplifies daily chores such as bedding, feeding, watering and cleaning
- Provides shelter against all types of weather
- Place directly on ground or choose new optional Flex-Floor for best drainage, easiest maintenance
- Adjustable, hinged Flex-Roof Cover™ opens in one easy movement
- Adjustable rear door allows single-motion ventilation control
- Unit includes 10-quart buckets, bottle holders
- 10-year limited warranty

* Patented



Standard Features

FLEX-ROOF COVER™



SIMPLIFIES DAILY CHORES



ONE-STEP REAR VENT CONTROL



Closed

ONE-STEP REAR VENT CONTROL



Open

SMALL HANGING GRAIN FEEDER

NEW



Keeps feed dry and accessible

Our Flex-Hutches can house two or three calves depending on your choice of configurations.

AGRI-PLASTICS
The Calf Housing Specialist®



WHAT SETS OUR CALF HUTCHES APART

These hutches have “flex” in the name for a reason—because their flexibility gives you options to best fit your calf management requirements. We’ll configure the Flex-Hutch to serve two or three calves each, and either way you’ll appreciate the many time- and labor-saving features built into every Flex-Hutch.



GROUP HUTCHES*

Stress can be detrimental to calf health and growth. Our Group Hutches are designed to ease the transition from individual to group housing, and to make it easier for your crew to provide the best care.

Swing-Up Rear Bedding Door

makes it easier to add bedding, facilitating cleaner housing and healthier calves.

Ridge Ventilation

with a Grill Vent in the front and a Rear Top Rotary Vent you can use to control the airflow.

Molded In One Piece

for superior strength that will withstand tough conditions. Our group hutches have no seams, no rivets and no points of weakness.

Integrated Poly Skid

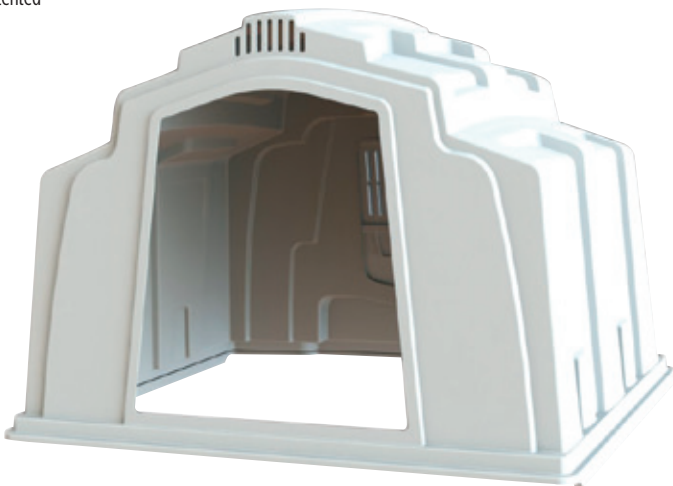
will not freeze to the ground the way wood skids do.

Other Great Features

include extra hutch height that accommodates longer growth periods, multiple vents for optimal ventilation and a truly opaque design.

At Agri-Plastics, we stand behind our hutches. With a 10-year limited warranty, they are the only serious choice.

* Patented



Standard Features

SWING-UP REAR BEDDING DOOR



MANUAL FEED



MECHANICAL FEED



INTEGRATED POLY SKID



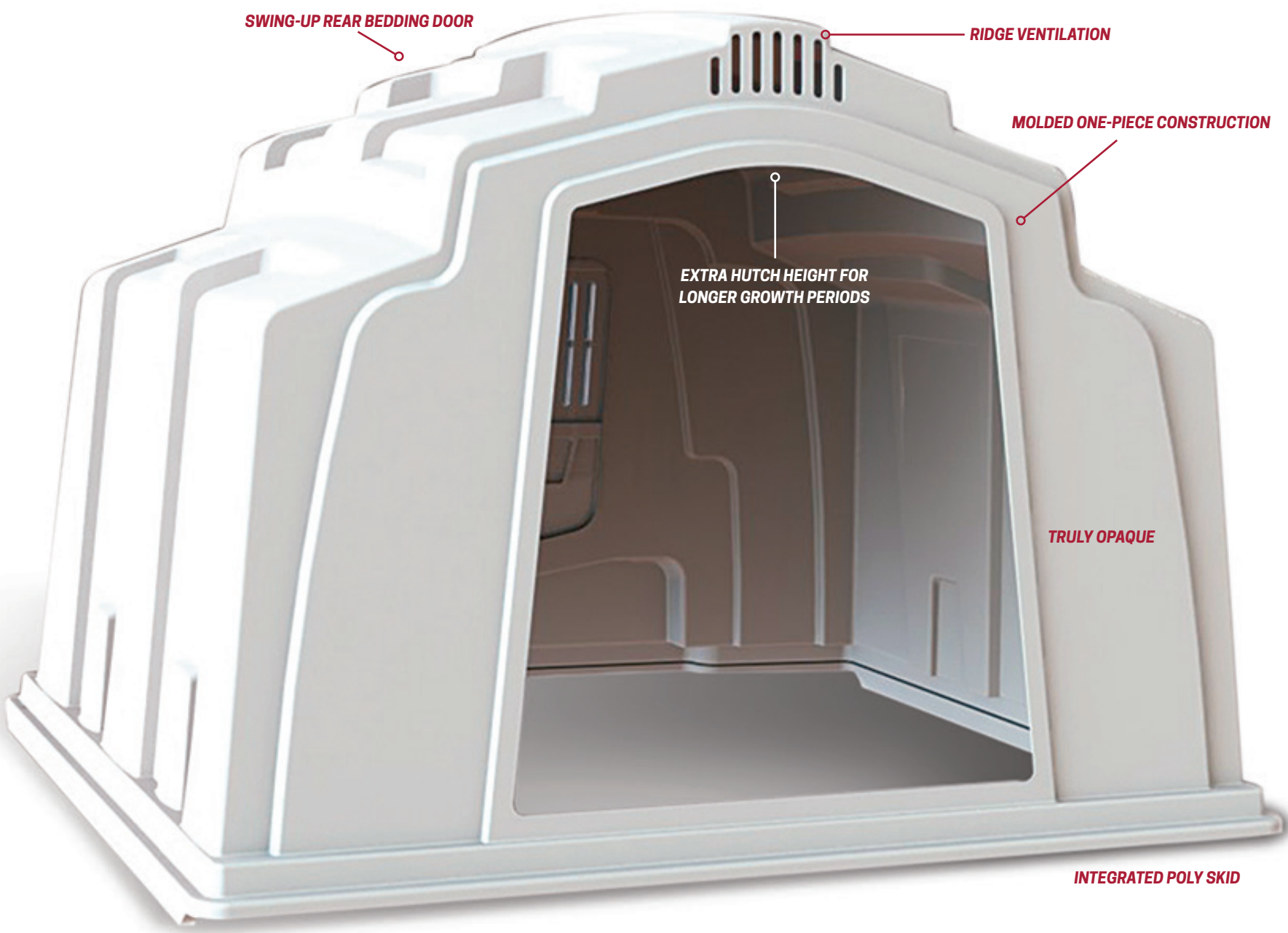
REAR VENTILATION



REAR TOP ROTARY VENT



Our Group Hutches transition weaned calves to group conditions with ease.



WHAT SETS OUR CALF HUTCHES APART

Our group housing is designed by dairy farmers, for dairy farmers. That means our innovations come directly from the farm to solve the problems you and your crew face every day. From the strong one-piece construction and integrated poly skids to rear rotary vents and a swing-up rear bedding door, our hutches are designed to reduce stress among calves and crew members alike.

ROLLING GROUP FEEDING PENS

Rolling Group Feeding Pens cut down cleaning time and labor.



Efficiency, Ease and Savings

Cut down labor costs with the Rolling Group Feeding Pen—simply roll the fence back and forth to make cleaning easier and more efficient. With tough aluminum side panels and three mounted troughs, these pens are ideal for calves from 2 to 10 weeks of age. An optional Milk Bar is available to serve multiple calves at one time.

- Pen rolls back and forth for easy cleaning
- Side panels feature a tough aluminum construction
- Recommended for calves 2 to 10 weeks old
- Includes three troughs
- Optional Milk Bar available

OPTIONS: Transition Pen System

Moving or disassembling group transition pens should be quick and easy. That's why Agri-Plastics designed our Transition Pen System to pin together simply at the corners. The side panels are made from aluminum to withstand tough conditions, so you don't have to sacrifice longevity for a product that's easy to use. Choose from the Standard or XL sizes to fit the needs of your herd.

- Corners quickly pin together for simple disassembly and moving
- Economical, sealed plastic feed trough reduces waste
- Aluminum side panels contribute to a quality design
- Recommended for weaning up to 20 weeks of age
- Water bucket is not included



OPTIONAL LIFT KIT ALLOWS HUTCH TO BE LIFTED EASILY

SHOWN WITH LIFT KIT
AGRI-4034



STANDARD Transition Pen System



XL Transition Pen System



WHAT SETS OUR CALF HUTCHES APART

Cut down on labor requirements without short-changing your calves with our efficient rolling pens. Cleaning is fast and simple—just roll the fence back and forth to get the job done quickly while causing minimal stress to your calves.

STARTER PENS*

SELECTION GUIDE

Starter Pen

The Starter Pen from Agri-Plastics is designed for getting your calves off to a healthy start. These units are just for short term use before moving your calves to your Calf Hutches, larger Indoor Pens, Group Housing or Robotic Feeding set-ups.

Optional Accessories for All Starter Pen Models Include:

- Bottle holder
- Milk bottle
- Teat bucket
- Pail ring
- Starter bowl
- Bucket

Elevated Starter Pen

For optimal drainage, the Elevated Starter Pen is made with a slatted floor that sits above the ground on galvanized metal legs.

Movable Starter Pen

Easily change the position of the Movable Starter Pen using the two swivel wheels with brakes and two rigid wheels that are mounted directly to the slatted floor.

* Patented



Starter Pen

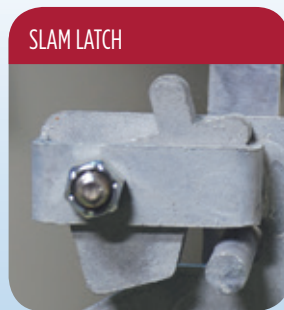


Elevated Pen



Movable Pen

Standard Features



YOUR CHOICE OF



TEAT BUCKET
FRONT FEEDING



BOTTLE FRONT
FEEDING

Starter Pens are designed to get your calves off to a healthy start.



WHAT SETS OUR CALF HUTCHES APART

By giving your newest calves housing designed specifically to meet their needs, you can help your calves get off to a great start. Our Starter Pens are made with slatted floors to help improve ventilation and are easy to flip to clean for proper hygiene.

POLY FARM PRODUCTS

Built for toughness. Built to last.

Our complete line of polyethylene plastic items are as rugged as it gets, resisting damage from weather, corrosive substances and rough daily handling. That includes our Feed Carts and Silage Carts, as well as high-density polymer FootBath and easy-to-use BootBath. Select a Stock Tank to fit your needs, either round or rectangular, each with a float cover included.

Our Poly Brisket Board has pre-drilled holes and won't crack, chip or splinter. The Poly Silo Clean Chute is clog-resistant and simple to install. Two styles of Poly Feed Bunks include the "J" Bunk to prevent sore noses and tongues and the "U" Bunk in 8-foot sections to use individually or bolted together.

Additional Features include:

- Efficient, effective and easy to install
- Weather-resistant construction
- Designed with farmers in mind



Products

SILAGE AND FEED CARTS



FOOTBATH AND BOOTBATH



STOCK TANKS



AGRI-BRISKET BOARD



POLY SILO CLEAN CHUTE



HOUSING VENTILATION



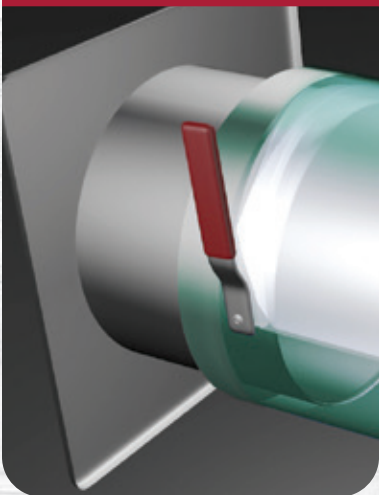
FLAP DUCT® Pre-Engineered Ventilation Tube System keeps air flowing in any structure.

The FLAP DUCT® builds on the best features of the FLIP DUCT® Ventilation System to give producers even more control over ventilation requirements for a customized solution that shelters your biggest investment—your calves.

Agri-Plastics understands that individual setups often need individualized solutions. With FLAP DUCT®, the patented internal membrane can be adjusted up or down to adjust the airflow based on seasonal conditions with the simple flick of a lever. This system is particularly useful during the spring and the fall, when the days are warm and the nights cool. With the membrane in the up position, high speed air showers calves during warm weather. Simply move the lever down to adjust the membrane to the bottom of the tube to deliver slow, non-drafty fresh air during cold weather. Once installed, the membranes can be moved up or down to precisely control airflow based on your herd's needs in every season.

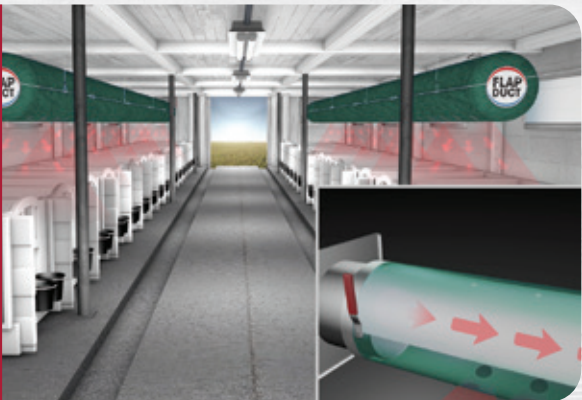


LEVER CONTROL MECHANISM



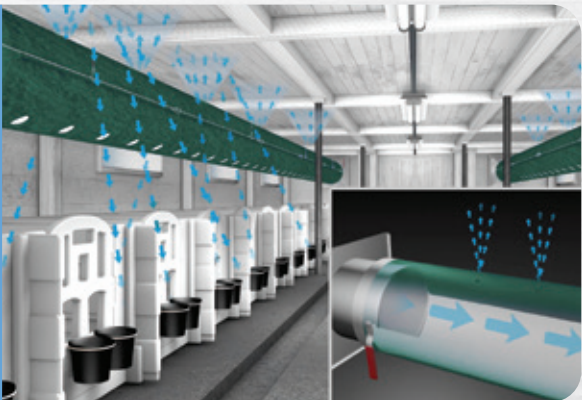
WARM WEATHER

- Variable speed fan set to HIGH
- Internal membrane rests at TOP of duct
- EASY lever control: It's a breeze to adjust to changing conditions



COLD WEATHER

- Variable speed fan set to LOW
- Air flows through SMALL holes
- Gently delivers slow, non-drafty fresh air to calves



ACCESSORIES

BOTTLE



AGRI-1070 2QRT
AGRI-1071 3QRT
AGRI-1074 4QRT

Choose from a 2, 3 or 4 quart bottle with soft rubber teat. For all housing products.

FENCE-MOUNT BOTTLE HOLDER



AGRI-2003

Fits a 2 or 3 quart bottle. Hangs on front of fence. Fits on all of the fence models.

SL BOTTLE HOLDER



AGRI-2002

Fits a 2 or 3 quart bottle. For SSL & SL Calf Hutch.

WIRE BOTTLE HOLDER



AGRI-7024

Easy to take on and off for cleaning. For Starter & Flex-Pens.

TEAT BUCKET



AGRI-4009

For all housing products.

MILK BAR



AGRI-MB1

One calf 3L / 0.79 US Gallon.

MILK BAR



AGRI-MB1EL

One calf 8L / 2 US Gallon.

MILK BAR



AGRI-MB2C

Two Calves / Two compartments 2.5L / 0.66 US Gallon.

MILK BAR



AGRI-MB5C

Five Calves / five compartments 2.5L each / 0.66 US Gallon each.

MILK BAR



AGRI-MB6

Six Calves 36L / 9.5 US Gallon.

MILK BAR REPLACEMENT TEATS



AGRI-MBRT

Replacement Teats for Milk Bar products, sold in a 10 pack. For all Milk Bar products.

SMALL HANGING GRAIN FEEDER



AGRI-8030

Holds enough grain for 1-2 days. For all housing products.

LARGE HANGING GRAIN FEEDER



AGRI-1132

Holds enough calf feed for 3 days. Mounts onto our wire fence. For all housing products.

EARLY STARTER BOWL



AGRI-1067

4" bowl for much faster calf starter intake during first 2 weeks. For all housing products.

HAY FEEDER



AGRI-2052 SL
AGRI-1052 EXL

Hangs on the inside of hutch and includes side access. For SL & EXL Calf Hutches.

WEATHER COVER



AGRI-4013

Protects feed from the elements. For all housing products.

DOUBLE FENCE MOUNT BUCKET HOLDER



AGRI-1048D

Fits on all wire fences.

SINGLE FENCE MOUNT BUCKET HOLDER



AGRI-1048S

DOUBLE-SIDED HAY FEEDER



AGRI-7025
AGRI-3040 Drop-In-Go Pen

Galvanized Double-sided Hay Feeder. For the Drop-In-Go & Flex-Pen Systems.

BUCKET RING



AGRI-6005

For the Starter Pen.

BUCKET



AGRI-1049H

For all housing products.

CALF JACKET



AGRI-5000

With quick release buckles.

INFO STICKERS



AGRI-7026

Comes in rolls of 250. Can be used to ID your calf hutch and calf. For all housing products.

HOLD DOWN HUTCH ANCHOR



AGRI-2072 HW

Remove pin and drop aircraft cable into place. Cable not included. For all hutches.

Options for the Drop-In-Go Indoor Pens

HEADLOCK



AGRI-3020

WALL CHANNEL INDOOR PEN



AGRI-3019

QUICK-RELEASE BOTTLE HOLDER



AGRI-3012

BEDDING STOPPER



AGRI-3013

NOSE BUMPER FULL KIT



AGRI-3032

Options for the Flex-Pen

WALL BRACKET FLEX-PEN



AGRI-7012

Galvanized wall bracket. For the Flex-Pen System.

GROUP HOUSING BAR



AGRI-7013, 7014, 7015

Used when the center panel is removed. For the Flex-Pen System.

Options for the Calf Hutches

FRONT FEEDING DOOR



AGRI-1073

For SL & EXL Calf Hutch.

HINGE STORM DOOR



AGRI-2063

The Storm Door will stay open against the wire fence. For the SL Calf Hutch.

SNAP-IN STORM DOOR



AGRI-2062 SL
AGRI-1062 EXL

Protects calves from the elements. For all SL & EXL Hutches.

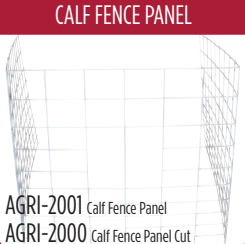
FRONT PLASTIC PIPES



AGRI-5041 SSL
AGRI-2041 SL
AGRI-1041 EXL

Keeps calves inside their hutches. For all hutches.


CALF FENCE PANEL



AGRI-2001 Calf Fence Panel
AGRI-2000 Calf Fence Panel Cut

Made from 1/4" dia. galvanized steel. Measures 42" H x 72" D x 48" W. For all hutches.

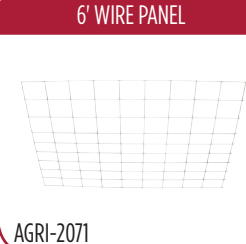
HD FRONT PANEL



AGRI-2070

Includes pail rings. For all hutches.

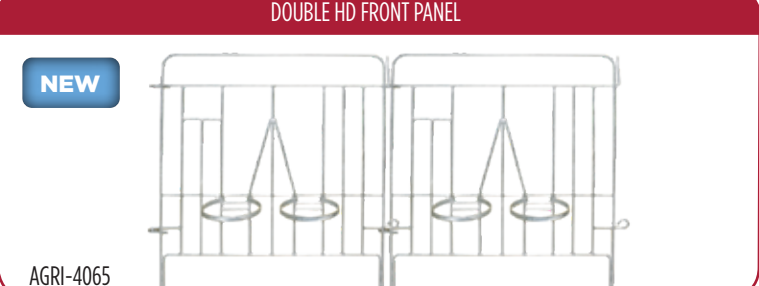
6' WIRE PANEL



AGRI-2071

For use with the HD Front Panel. For all hutches.


DOUBLE HD FRONT PANEL



AGRI-4065

Includes pail rings. For Buddy System Group Hutch.

FENCE ATTACHMENT HARDWARE



AGRI-2036

TETHER BAR KIT



AGRI-2017 SL
AGRI-5010 SSL
AGRI-1017 EXL

Includes metal bar, neck strap, chain and eye bolts for mounting. For SL, SSL & EXL Calf Hutches.

4-IN-ONE SUPREME FENCE: PENS ROLL BACK AND FORTH FOR EASY CLEANING



AGRI-1800 SL
AGRI-1900 EXL

SPECIFICATIONS

	SSL Calf Hutch (Spacesaver) <i>Dimensions</i> Outside Dimensions Inside Dimensions Weight Includes: Top Vent, Rear 3-In-One Door, and Bottom Airflow Vents.	AGRI-5001 <i>Imperial</i> 61" L x 45.5" W x 47" H 57" L x 41.5" W x 42" H 55 lbs. <i>Metric</i> 155 cm L x 115.5 cm W x 119 cm H 145 cm L x 105 cm W x 107 cm H 25 kg
	Deluxe SL Calf Hutch <i>Dimensions</i> Outside Dimensions Inside Dimensions Weight Includes: Side Door, 2 Buckets, Manger, Top Vent, Rear 3-In-One Door, and Bottom Airflow Vents.	AGRI-2016 <i>Imperial</i> 87" L x 49" W x 55" H 79" L x 44.5" W x 50" H 95 lbs. <i>Metric</i> 221 cm L x 124 cm W x 140 cm H 201 cm L x 113 cm W x 127 cm H 43 kg
	Deluxe EXL Calf Hutch <i>Dimensions</i> Outside Dimensions Inside Dimensions Weight Includes: Side Door, 2 Buckets, Manger, Top Vent, Rear 3-In-One Door, and Bottom Airflow Vents.	AGRI-1045 <i>Imperial</i> 97.5" L x 62.5" W x 56" H 90.5" L x 56.5" W x 51" H 135 lbs. <i>Metric</i> 248 cm L x 159 cm W x 142 cm H 230 cm L x 144 cm W x 130 cm H 61 kg

	SSL Calf Hutch Rancher System <i>Dimensions</i> Outside Dimensions Inside Dimensions Fence Dimensions with Hutch Weight (incl. Fence) Includes: Top Vent, 3-In-One Rear Door, Bottom Airflow Vents, Outside Feed, 2 Buckets, and a Galvanized Wire Fence.	AGRI-5001RF <i>Imperial</i> 61" L x 45.5" W x 47" H 57" L x 41.5" W x 42" H 125" L x 48" W 97 lbs. <i>Metric</i> 155 cm L x 115.5 cm W x 119 cm H 145 cm L x 105 cm W x 107 cm H 317.5cm L x 122cm W 44 kg
	SL Calf Hutch Rancher System <i>Dimensions</i> Outside Dimensions Inside Dimensions Fence Dimensions with Hutch Weight (incl. Fence) Includes: Top Vent, 3-In-One Rear Door, Bottom Airflow Vents, Outside Feed, 2 Buckets, and a Galvanized Wire Fence.	AGRI-2016RF <i>Imperial</i> 87" L x 49" W x 55" H 79" L x 44.5" W x 50" H 150" L x 49" W 134 lbs. <i>Metric</i> 221 cm L x 124 cm W x 140 cm H 201 cm L x 113 cm W x 127 cm H 381cm L x 124cm W 61 kg
	EXL Calf Hutch Rancher System <i>Dimensions</i> Outside Dimensions Inside Dimensions Fence Dimensions with Hutch Weight (incl. Fence) Includes: Top Vent, 3-In-One Rear Door, Bottom Airflow Vents, Outside Feed, 2 Buckets, and a Galvanized Wire Fence.	AGRI-1045RF <i>Imperial</i> 97.5" L x 62.5" W x 56" H 90.5" L x 56.5" W x 51" H 158" L x 62.5" W 174 lbs. <i>Metric</i> 248 cm L x 159 cm W x 142 cm H 230 cm L x 144 cm W x 130 cm H 401cm L x 159cm W 79 kg

	3-in-1 Triple Unit Flex-Hutch <i>Dimensions</i> Outside Dimensions Inside living area per calf Weight	AGRI-8001 AGRI-8001B (Includes Bottle Holder) <i>Imperial</i> 72" L x 96" W x 52" H 68" L x 30" W x 49" H 261 lbs. <i>Metric</i> 183 cm L x 244 cm W x 132 cm H 180 cm L x 76 cm W x 125 cm H 118 kg
	2-in-1 Double Unit Flex-Hutch <i>Dimensions</i> Outside Dimensions Inside living area per calf Weight	AGRI-8002 AGRI-8002B (Includes Bottle Holder) <i>Imperial</i> 72" L x 96" W x 52" H 68" L x 46" W x 49" H 226 lbs. <i>Metric</i> 183 cm L x 244 cm W x 132 cm H 180 cm L x 117 cm W x 125 cm H 103 kg
	Group Hutch <i>Dimensions</i> Outside Dimensions Inside Dimensions Weight Includes: 3-In-One Swing Up Rear Door and Rear Top Rotary Vent.	AGRI-4033 <i>Imperial</i> 90" L x 106" W x 79" H 81" L x 100" W x 75" H 250 lbs. <i>Metric</i> 229 cm L x 269 cm W x 200 cm H 296 cm L x 254 cm W x 191 cm H 113 kg
	International Group Hutch <i>Dimensions</i> Outside Dimensions Inside Dimensions Weight	AGRI-4032 <i>Imperial</i> 92" L x 98" W x 79" H 81.5" L x 92" W x 75" H 250 lbs. <i>Metric</i> 234 cm L x 249 cm W x 200 cm H 207 cm L x 234 cm W x 191 cm H 113 kg

	Rolling Group Feeding Pen / Lift Kit <i>Dimensions</i> Outside Dimensions Weight Rolling Pen only. Includes 3 Troughs and Lift Kit.	AGRI-4036 (Pen) / AGRI-4034 (Lift Kit) <i>Imperial</i> 96" L x 108" W 145 lbs. <i>Metric</i> 243 cm L x 274 cm W 66 kg
	Transition Pen System / Lift Kit <i>Dimensions</i> Outside Dimensions Weight Pen only. Includes Feed Trough.	AGRI-1033F (Pen) / AGRI-4034 (Lift Kit) <i>Imperial</i> 192" L x 108" W 200 lbs. <i>Metric</i> 488 cm L x 274 cm W 91 kg
	XL Transition Pen System / Lift Kit <i>Dimensions</i> Outside Dimensions Weight Pen only. Includes Feed Trough.	AGRI-1034F (Pen) / AGRI-4034 (Lift Kit) <i>Imperial</i> 192" L x 138" W 225 lbs. <i>Metric</i> 488 cm L x 351 cm W 102 kg



Optional Group Hutch Lift Kit
AGRI-4034

SPECIFICATIONS



Starter Pen

Dimensions
Outside Dimensions
Inside Dimensions

**AGRI-6000B
AGRI-6000T**

Imperial
51.5" L x 40" W x 42.5" H
47" L x 34.5" W x 42" H

Metric
131 cm L x 102 cm W x 108 cm H
120 cm L x 88 cm W x 106 cm H



Elevated Starter Pen

Dimensions
Outside Dimensions
Inside Dimensions
Slatted Floor Outside Dimensions

**AGRI-6013B
AGRI-6013T**

Imperial
51.5" L x 40" W x 42.5" H
47" L x 34.5" W x 42" H
55" L x 42" W x 9.25" H

Metric
131 cm L x 102 cm W x 108 cm H
120 cm L x 88 cm W x 106 cm H
140 cm L x 106 cm W x 23 cm H



Movable Starter Pen

Dimensions
Outside Dimensions
Inside Dimensions
Slatted Floor Outside Dimensions

**AGRI-6014B
AGRI-6014T**

Imperial
51.5" L x 40" W x 42.5" H
47" L x 34.5" W x 42" H
55" L x 42" W x 9.25" H

Metric
131 cm L x 102 cm W x 108 cm H
120 cm L x 88 cm W x 106 cm H
140 cm L x 106 cm W x 23 cm H



Silage Carts

17 Bushel Capacity AGRI-1034
20 Bushel Capacity AGRI-1009

Imperial
63" L x 28" W x 36" H
63" L x 37" W x 38" H

Metric
160 cm L x 71 cm W x 91 cm H
160 cm L x 94 cm W x 97 cm H



Feed Carts

8 Bushel Capacity AGRI-1006
12 Bushel Capacity AGRI-1007
18 Bushel Capacity AGRI-1008

Imperial
46" L x 21.5" W x 36" H
45.5" L x 29" W x 36" H
59.5" L x 27.5" W x 38" H

Metric
117 cm L x 55 cm W x 91 cm H
115.5 cm L x 74 cm W x 91 cm H
151 cm L x 70 cm W x 97 cm H

Swivel and Rear Wheels for all Carts approx. 10" x 3.5" / 25 cm x 9 cm



**FootBath
AGRI-1005**

Imperial
78" L x 32" W x 6" H

Metric
198 cm L x 81 cm W x 15 cm H



**BootBath
AGRI-1030**

Imperial
28" L x 18" W x 4" H

Metric
71 cm L x 46 cm W x 10 cm H



Stock Tanks, Float Cover Lid included

175 Gallon, Round AGRI-1001
200 Gallon, Round AGRI-1002
100 Gallon, Rectangular AGRI-1003

3/4" Float Valve for above Stock Tanks AGRI-1004

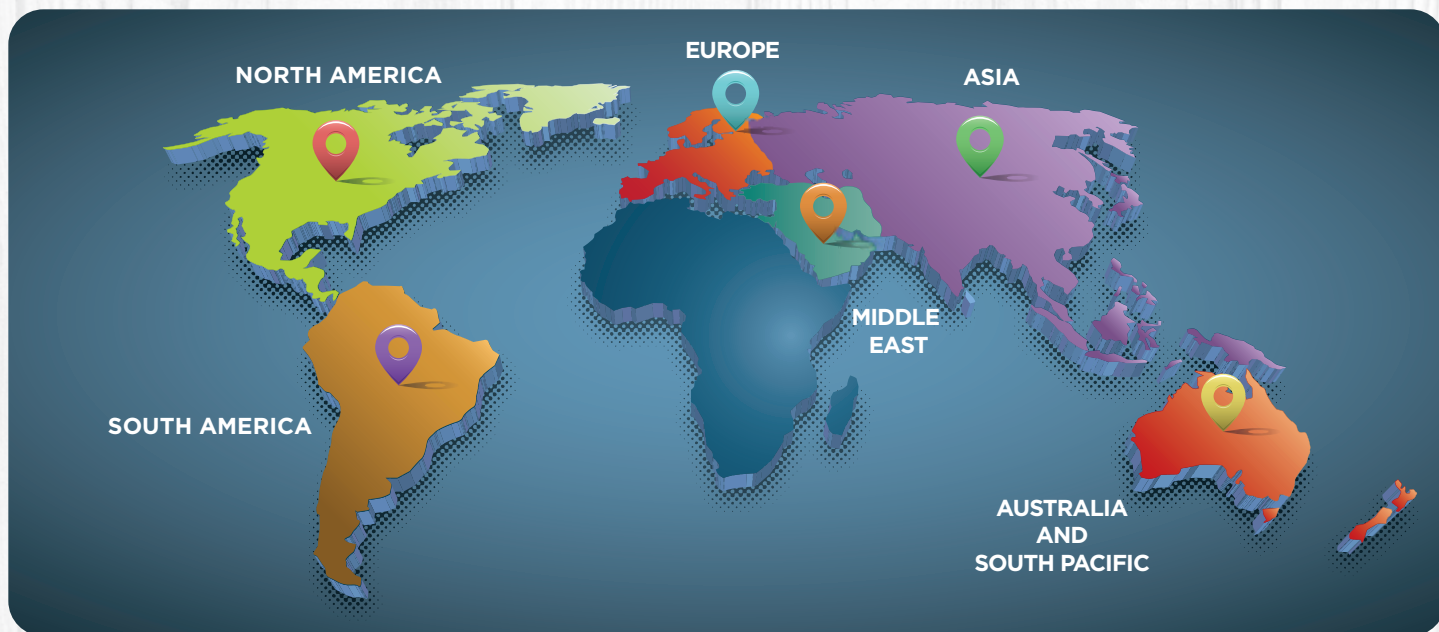


Poly Silo Clean Chute
Twist and Lock Clean Chute AGRI-1014



Agri-Brisket Board
8' length AGRI-3034

OUR REACH IS GLOBAL



Agri-Plastics Manufacturing is owned and operated by third-generation dairymen. It is through hands-on experience that Agri-Plastics develops and tests its products. Agri-Plastics' mission is to offer the best quality products for the farming industry by designing solutions that meet our customers' expectations, while establishing a worldwide reputation for reliability and durability.

USA HEAD OFFICE & MFG. PLANT

Agri-Plastics USA LLC
701 East Elm Street
Sidney, NE 69162
T.F.: 1.888.231.3575
Tel: 1.308.254.1137
Fax: 1.308.254.4527
info@calfhutch.com

NORTH EASTERN USA WAREHOUSE

Agri-Plastics Mfg.
3731 Luker Road
Cortland, NY 13045
T.F.: 1.888.231.3575
Tel: 1.607.591.0103
info@calfhutch.com

CANADIAN HEAD OFFICE & MFG. PLANT

Agri-Plastics Mfg.
7793 Young Street
Grassie, ON
Canada LOR 1M0
T.F.: 1.888.231.3575
Tel: 1.905.945.3116
Fax: 1.905.945.5359
info@calfhutch.com

EUROPE/SOUTH AMERICA CIS/MIDDLE EAST SALES

Agri-Plastics International
Knock na Creva
Athenry Co. Galway
Ireland
Tel: +353 91 844071
intsales@agri-plastics.net

NZ/AUSTRALIA SALES OFFICE

Agri-Plastics Mfg.
21 Snowden Road
Hadlow 4RD
Timaru 7910
New Zealand
Tel: +64 21737474
info@calfhutch.com

AGRI-PLASTICS
The Calf Housing Specialist®

www.calfhutch.com • info@calfhutch.com

